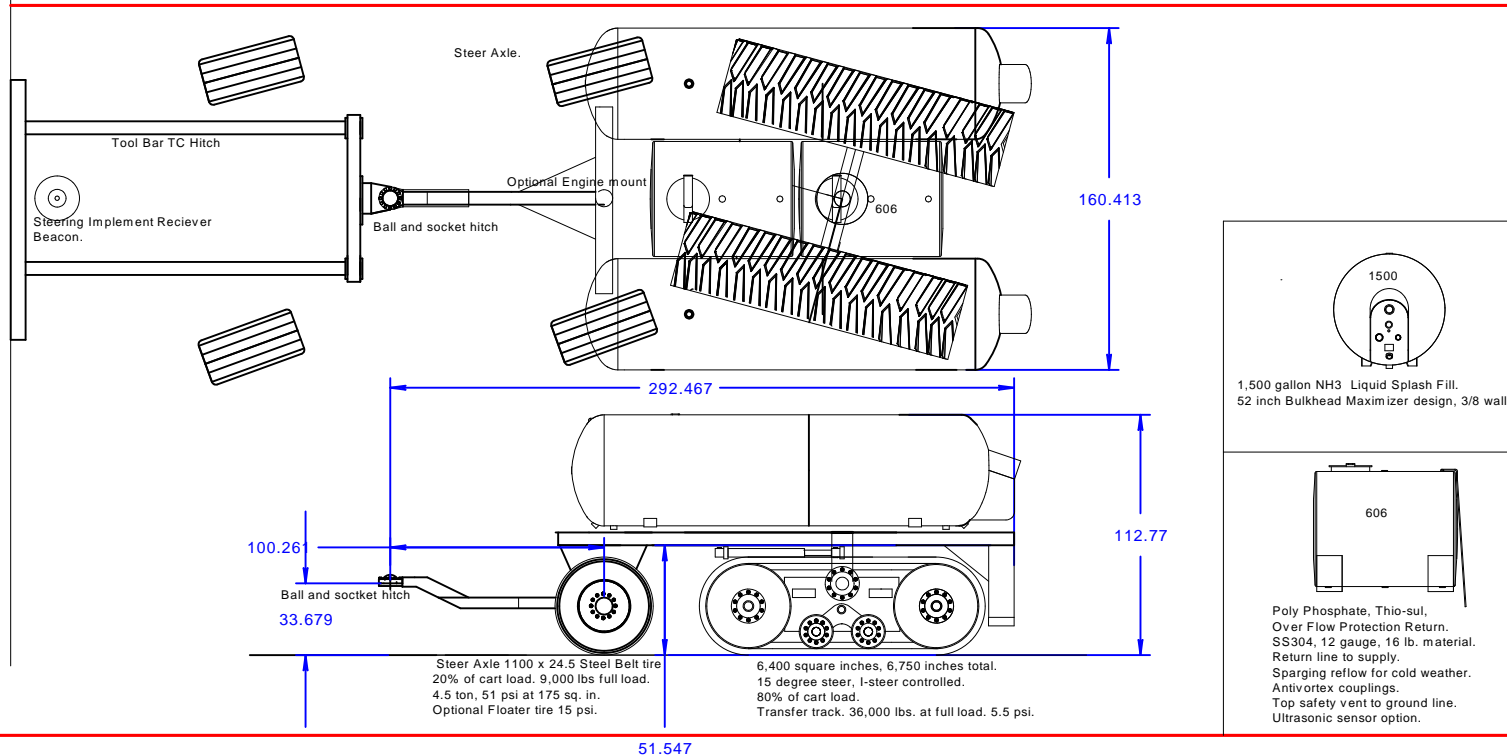


Yielder3,000 Singe Axle, Track Steer Cart.
September29, 18.
I- SteerageControlledon standardgauge center 120 inches.



Note: Steer axle weight and loading can be lowered to 5,000 lbs. filling front liquid tank to 20% or 1500 lbs.

Yielder 3000, Single Steer Axle. Track Cart. I- Steer Design.

Frame, Axles, Tracks, Tires.....	10,650 lbs.
NH3 Tanks, Qty. 2. 3000 gal.	6,400lbs.
Liquid tanks, stainless steel,	700lbs.
Track Cart, GVW, Empty.....	17,550 lbs.
NH3 90% fill Payload,.....	13,878 lbs.
Liquid 90%.....	14,040 lbs.
Total Payload,.....	27,928 lbs.
Laden Full load	45,478 lbs.
Average Load.....	31,500 lbs.
Axle Load Max.....	5.54 tons.
Average Axle Load,.....	3.15 tons.
Flat Plate Contact, Full Load.....	6,750 sq. in.
Full Load Ground Pressure.....	6.7 psi.
Average Load Ground Pressure,.....	4.66 psi.
No load Ground Pressure,.....	2.6 psi.